



# 2026 LEGISLATIVE & POLICY AGENDA



**KANSASCHAMBER**  
UNITED FOR BUSINESS

SAFEGUARDING OUR SYSTEM OF FREE, COMPETITIVE ENTERPRISE

## TABLE OF CONTENTS

	Agenda Priorities .....	2
	Kansas Business At A Glance .....	3 & 4
	Taxation .....	5
	Talent Supply & Workforce Development .....	6
	Legal Reform .....	7
	Human Resource Issues .....	8
	Regulatory Affairs .....	9
	Innovation & Entrepreneurship .....	9
	Government Efficiency .....	10
	Energy & Environment .....	11
	Health Care .....	12
	Kansas Retail Council .....	13
	Kansas Manufacturing Council .....	14



**T**HE MISSION OF THE KANSAS CHAMBER OF COMMERCE IS TO CONTINUALLY STRIVE TO IMPROVE THE ECONOMIC CLIMATE FOR THE BENEFIT OF EVERY BUSINESS AND CITIZEN AND TO SAFEGUARD OUR SYSTEM OF FREE, COMPETITIVE ENTERPRISE.



# '26 TOP AGENDA PRIORITIES

**The 2026 Legislative & Policy Agenda reflects the Kansas Chamber's efforts to reduce the cost of doing business in Kansas, create jobs & grow the state's economy. Its top five priorities highlight key points of focus:**

## Support Comprehensive Tort Reform Efforts

Kansas has become the 18th friendliest state for trial lawyers as our court system has eroded protections and expanded liability against businesses and individuals. This expanded liability means higher insurance costs and higher costs on products and services. The Kansas Legislature must pass policies that ensure the Kansas legal climate is fair and reasonable.

## Oppose Paid Leave Mandates

There is a growing effort nationally to burden businesses with mandated paid leave for all employees. Employee benefits are a decision best left to businesses who take care of their workforce, rather than a one-size-fits-all mandate. The Kansas Chamber remains committed to opposing all employer mandates for benefits not required by the federal government.

## Income Tax Credit and Incentive Clean Up

Kansas has more than 70 income tax credits on the books. Throughout 2025, the Kansas Chamber worked alongside economic development professionals, CPA's and tax advisors to clean up under utilized and outdated income tax credits and will be bringing legislation to eliminate 21 tax credits off the books, as well as proposing several small changes to the state's HPIP incentive program.

## Health Care Reform

With adoption of the Rural Health Transformation Program in the One Big Beautiful Bill, Kansas continues to expand access to health care professionals by responsibly reducing outdated scope-of-practice barriers and advancing licensure compacts that ease workforce mobility. These reforms strengthen Kansas' ability to attract providers and position the state to receive additional funding over the program's five-year term.

## Improve Energy Costs

Kansas ranks 10th in the U.S. for renewable energy production. However, this low-cost source of energy has not resulted in savings for Kansas ratepayers. In fact, it's quite the opposite. Kansas continues to be the highest energy cost state in the region, making manufacturing and production of goods and materials expensive. Kansas must improve its energy costs to be more competitive.

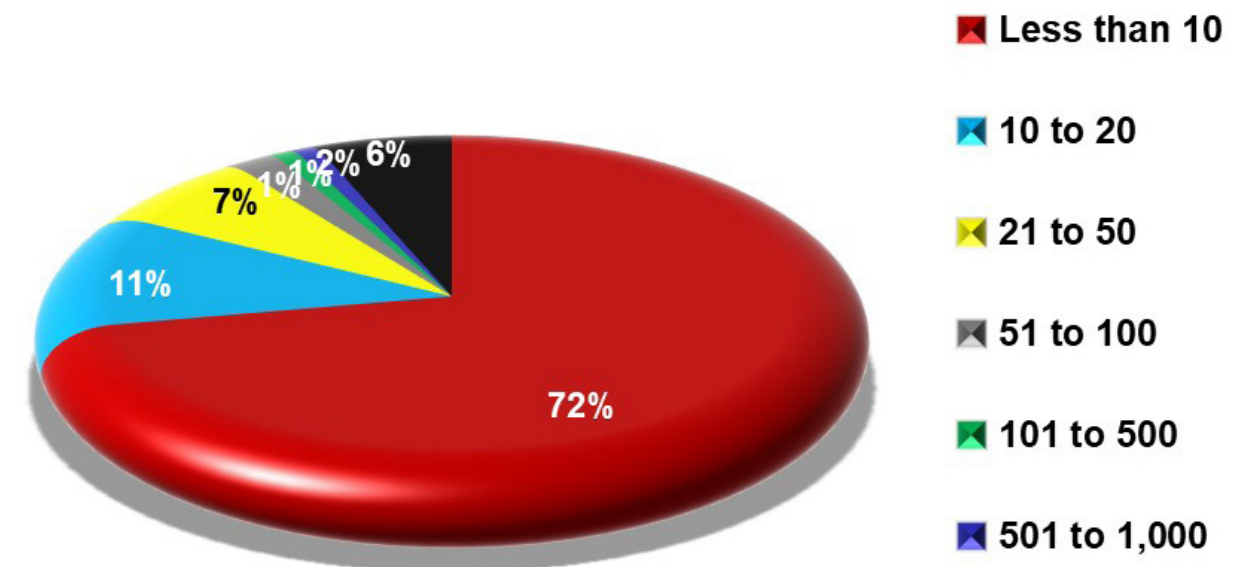
## KANSAS BUSINESS AT A GLANCE

The Kansas Chamber commissions Cole Hargrave Snodgrass & Associates annually to survey 300 Kansas businesses that reflect the Kansas business community geographically as well as by industry makeup and number of employees. The issues identified by our state's business community in the Business Leaders Poll help lay the foundation for the **2026 Legislative Agenda**.

### Most Important Issues Facing Kansas Businesses\*



### Number of Employees in Businesses Polled\*



### Most Important to Profitability\* (up to 2 answers)

- Lower taxes on business: **53%**
- Manage health care costs: **49%**
- Reduce fuel/energy costs: **20%**
- Economic Incentives: **18%**
- Decrease regulations/mandates: **16%**
- Limit growth of government: **13%**
- Stop frivolous lawsuits/tort reform: **11%**

### OTHER POLL NOTES FROM KANSAS BUSINESS LEADERS\*

- ▶ 80% An all-time high say property taxes need to be decreased
- ▶ 77% Believe it would help the economy to lower taxes
- ▶ 70% Believe childcare needs are keeping Kansans out of the workforce
- ▶ 60% Believe soft skills are the biggest challenge with the workforce today
- ▶ 56% The lowest level of satisfaction on record for business leaders perspective on public education

\*Source: The Kansas Chamber's 2025 Business Leaders Poll

## TAXATION\*

### REDUCE TAXES, ENCOURAGE INVESTMENT AND GROWTH

The Kansas Chamber urges the legislature to reduce the cost of doing business, and will encourage efforts to:

- ▶ Support review and clean-up of outdated income tax credits.
- ▶ Continue moving Kansas toward a competitive, single income tax rate through growth of state tax receipts to place the state in a position of regional and national competitiveness on personal and corporate income tax.
- ▶ Reduce government spending instead of increasing the cost of doing business through tax increases.
- ▶ Oppose efforts which would subject professional services to sales tax.
- ▶ Oppose the sunset or repeal of existing sales tax exemptions on business inputs and ensure business to business transactions are exempt from sales tax.
- ▶ Oppose elimination of the High-Performance Incentive Program (HPIP) and reinstate the same qualifying investment thresholds for all Kansas counties.
- ▶ Oppose efforts to freeze or eliminate the Promoting Employment Across Kansas (PEAK) program.
- ▶ Support legislation which moves Kansas from a destination-based state to an origin-based state for the purposes of collecting sales tax on intrastate transactions.
- ▶ Oppose any proposal to redirect the current .4 cent sales tax dedicated to the State Highway Fund and support completion of the projects encompassed in the Comprehensive Highway Plan.

\* Both a federal and state issue

#### Kansas' 2026 Business Tax Climate Index Rank



Source: Tax Foundation's 2026 State Business Tax Climate Index

#### What does it mean?

Kansas saw its tax ranking improve again for 2026, moving from 25th to 23rd (26th in 2024). A ranking from one (best) to 50 (worst). The Tax Foundation writes "Kansas' property tax split roll ratio is fairly high, with commercial properties bearing a higher share of the property tax burden compared to residential properties, but by forgoing a capital stock tax and estate or inheritance tax, Kansas outperforms many of its peers on this component. In 2025, lawmakers enacted legislation using tax triggers to provide individual and corporate income tax relief and, in time, to move to single-rate income taxes. These reforms will improve the state's performance on the Index."

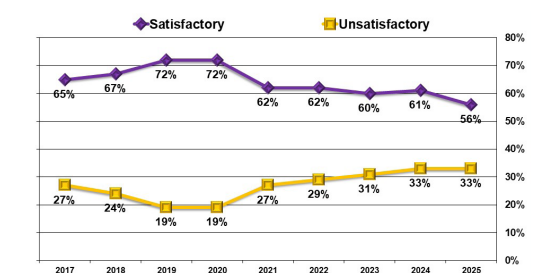
## TALENT SUPPLY & WORKFORCE DEVELOPMENT

### SUPPORT AN EXCELLENT EDUCATION SYSTEM WHICH PRODUCES A WELL-EDUCATED, WELL-TRAINED KANSAS WORKFORCE FOR TOMORROW'S BUSINESS NEEDS

The Kansas Chamber supports increasing the quality of education for tomorrow's workforce and the efficient use of tax dollars through policies that:

- ▶ Support regulatory and statutory changes related to occupational licenses to maintain public safety while allowing licensees to work to the utmost of their professional training and education.
- ▶ Support state implementation of workforce pathway system to provide parents, students and agencies with data to better track program effectiveness and student outcomes through their education and career path.
- ▶ Support a constitutional amendment for the democratically elected legislature to have exclusive authority to determine funding for schools in an effort to eliminate endless litigation over school funding.
- ▶ Support policies which promote coordination of resources and alignment of curriculum between K-12 and higher education institutions to ensure the workforce needs of Kansas businesses and career needs of students are being met.
- ▶ Support efforts to offer parents and students a variety of educational choices regardless of their socio-economic status, and support efforts to create innovative school environments designed to maximize the educational experience for all students.
- ▶ Strengthen requirements to enhance in-classroom spending and eliminate inefficient spending.
- ▶ Support vigorous and dynamic Kansas-based primary and secondary education standards that focus on college and career readiness and which ensure acquisition, retention and comprehension of an essential base of knowledge at every step of the educational process toward a career suited to each student's interest and ability.
- ▶ Support efforts to attract and retain the best and brightest teachers for the benefit of our Kansas students through a system that rewards excellence in teaching and innovation.
- ▶ Support efforts to enhance computer science for K-12 students.
- ▶ Support realigning education funding to give a higher weighting of Career and Technical Education (CTE) for high-wage, high demand jobs.

#### Satisfaction With Public School System?



Source: The Kansas Chamber's 2025 Business Leaders Poll

#### What does it mean?

Satisfaction with the public education system continues to slide for the third year in a row. Looking at the reasons why employers are dissatisfied with the workforce, soft skills continue to be the top concern.

## LEGAL REFORM

### PROMOTE FAIRNESS, REDUCE LIABILITY

The Kansas Chamber supports efforts to improve the legal climate in Kansas by reducing incentives for litigation that disproportionately awards plaintiffs and will support legislative efforts to:

- ▶ **Support comprehensive tort reform to improve the state's overall legal climate for Kansas businesses and residents.**
- ▶ Support reinstating caps on non-economic damages.
- ▶ Support statutory preemption of local units of government from hiring outside counsel to initiate class action litigation unless approved by the Attorney General.
- ▶ Repeal provisions of the current collateral source rule that prevents juries from hearing evidence that some of Plaintiff's claimed damages have already been paid.
- ▶ Support judicial selection reform measures that provide for a greater level of transparency, public input and accountability and encourage the legislature to construct a reasonable reform measure that addresses these objectives.
- ▶ Support legislation regarding admissibility of evidence of seat belt use.
- ▶ Support reform of Kansas law regarding awards of attorneys' fees against insurance carriers who contest coverage for loss under a policy that includes coverage for damage because of lightning, fire, tornado or hail.



"I want to commend the Kansas Chamber of Commerce for its tireless efforts in promoting policies that foster a strong business climate in Kansas. Their advocacy for fair taxation, regulatory improvement, and workforce development has been instrumental in making Kansas an increasingly attractive place to do business."

**Doug Gaumer | First Federal Bank of Kansas City**

"I support the Kansas Chamber's effort to remove barriers to help businesses succeed. The Chamber is a powerful advocate for businesses. With its support, we will continue to grow and thrive and solve problems that affect all Kansans."

**Nico Ciccone | NextEra Energy Resources**



## HUMAN RESOURCE ISSUES\*

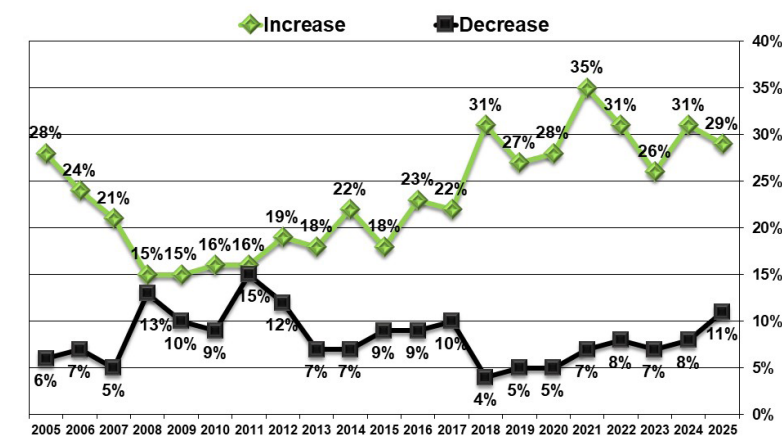
### REDUCE COSTS TO PROMOTE GROWTH

The Kansas Chamber supports policies that promote fairness and protect employer costs and will:

- ▶ Support criminal justice reform efforts and re-entry programs that offer the opportunity for individuals with criminal records to re-enter the workforce.
- ▶ Support policies that maintain the integrity of the Employment Security Trust Fund, and accurately reflect the employer experience rating when determining contribution rates.
- ▶ Defend the workers' compensation system and the recent reforms with policies that fairly compensate workers legitimately injured performing duties for their jobs, while maintaining low costs for employers.
- ▶ Encourage federal resolution to immigration reform and oppose state legislation increasing penalties or threatening the business licenses of employers who have unintentionally hired illegal workers. In the event Congress again fails to address the immigration situation, support legislation allowing states to implement guest worker programs that address each state's particular workforce needs while protecting our borders from the criminal element.
- ▶ Maintain fair labor practices by opposing unfair advantages for union organizations.
- ▶ Oppose state-led efforts which put employers in conflict with federal discrimination laws.

*\* Both a federal and state issue*

### Workforce Size Over Next Year



Source: The Kansas Chamber's 2025 Business Leaders Poll

### What does it mean?

This year shows a bit of a decline in the number of employers that expect to grow their workforce over the next 12 months.

With international economies softening, we must continue to watch economic trends and public spending.

## REGULATORY AFFAIRS\*

### SUPPORT FREE ENTERPRISE, ENCOURAGE COMPETITION

The Kansas Chamber supports a regulatory climate that promotes a healthy business climate and instills regulatory certainty, through policies that:

- ▶ Support legislation prohibiting local governments from banning consumer merchandise and plastic containers.
- ▶ Maintain a set of clear requirements in the regulatory process that instills confidence for businesses that follow the rules when seeking to do business in the state.
- ▶ Prevent imposition of burdensome state and federal regulations on business and industry.
- ▶ Encourage the least restrictive method of regulation that supports the goal of protecting the public without limiting competition.

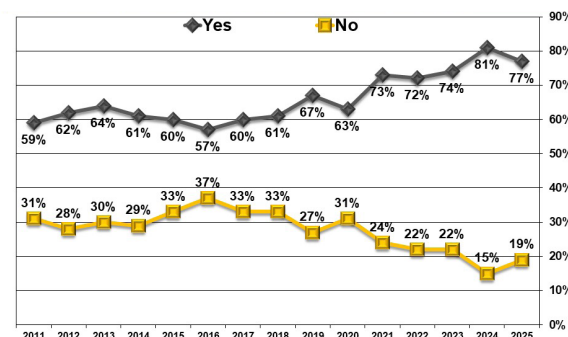
\* Both a federal and state issue

### What does it mean?

For the second year in a row - and only the second time in 15 years of asking this question - more than three-quarters of business leaders say that it would help the economy to lower taxes.

Source: The Kansas Chamber's 2025 Business Leaders Poll

### Would it Help the Kansas Economy to Lower Taxes?



## INNOVATION & ENTREPRENEURSHIP

### PROMOTE AND ENCOURAGE ENTREPRENEURSHIP AND CAPITAL INVESTMENT

The Kansas Chamber supports innovation and investment in start-up companies through policies that:

- ▶ Ensure financial barriers for business filings and start-up-related expenses are limited.
- ▶ Promote and expand small business development loans for Kansas start-ups through private institutions rather than the state.
- ▶ Minimize or eliminate barriers for transition of business ownership.
- ▶ Support continuation and expansion of Angel Investor Tax Credit program.

## GOVERNMENT EFFICIENCY

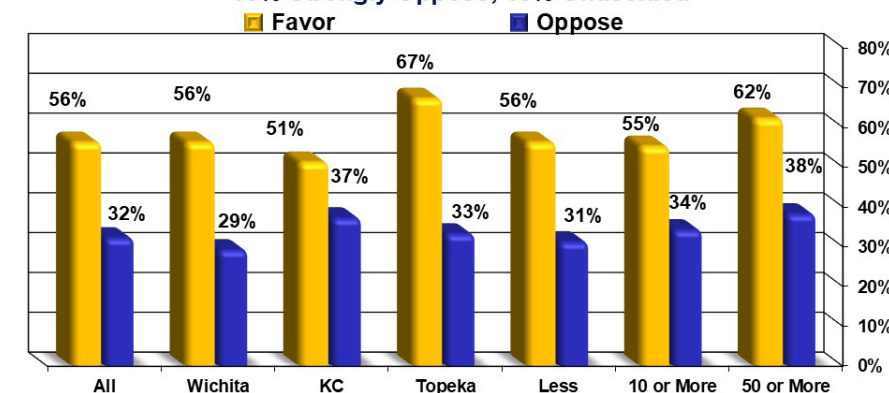
### CREATE AN ENVIRONMENT FOR JOB GROWTH

The Kansas Chamber encourages government reform aimed at lowering the overall cost of state government, so it is more affordable to Kansas businesses and residents through policies that:

- ▶ Establish a framework to encourage and incent the realignment and consolidation of state and local units of government.
- ▶ Oppose government competition with private sector companies.
- ▶ Promote adoption of "Lean Government" practices to transform the state into a more efficient enterprise.
- ▶ Support requirement of governor to submit existing resources budget to the legislature before proposing tax increases.
- ▶ Establish transparency and uniformity in budgeting for all levels of government.
- ▶ Support outsourcing state government functions to the private sector while maintaining needed services and lowering the cost of doing business in Kansas.
- ▶ Support efforts to continue identifying strategies to reduce the state pension burden on Kansas taxpayers while maintaining actuarially sound funding levels.
- ▶ Oppose use of public funds to bring litigation in pursuit of more public funding.

### Efforts to Consolidate Local Taxing Entities?

27% Strongly Favor; 29% Somewhat Favor; 15% Somewhat Oppose; 16% Strongly Oppose; 13% Undecided



Source: The Kansas Chamber's 2024 Business Leaders Poll

### What does it mean?

56% of respondents say the state needs to focus on government consolidation. Consolidation is favored over capping property tax increases.

## ENERGY & ENVIRONMENT\*

### PROMOTE MARKET-DRIVEN SOLUTIONS TO REDUCE ENERGY COSTS

The Kansas Chamber supports efforts to maintain a comprehensive energy policy that balances a diverse portfolio of energy sources and technologies, and will:

- ▶ Oppose ROFR (Right of First Refusal) laws which eliminate competitive bidding for construction of regional transmission lines.
- ▶ Support limits on increases in transmission delivery charges.
- ▶ Support equitable allocation of transmission and energy costs among regional ratepayers.
- ▶ Support policies that ensure reliable and available electric generation services from a diverse mix of energy fuel sources.
- ▶ Support efforts to achieve regionally-competitive electric rates, delivery costs, and ensure uninterrupted service regardless of source.
- ▶ Support further review of modifications to the Kansas Corporation Commission makeup and appointment process to support the state goal of regionally competitive electric rates.
- ▶ Support implementation of key recommendations from the legislative study on the competitiveness of Kansas energy rates to improve our state's electricity costs.
- ▶ Support policies that create equal competition among energy sources and technologies.
- ▶ Support incentives for businesses to voluntarily utilize energy more efficiently versus penalties and/or mandates.
- ▶ Oppose mandates and policies that increase business costs when sourcing energy.
- ▶ Support efforts to limit or block state and federal regulations which overreach and impose undue expense and regulatory burdens on Kansas businesses and industries.
- ▶ Support review and reform of current rate-making policies and processes to ensure fairness and equity among ratepayer classes.
- ▶ Promote the development of market-driven energy technologies.

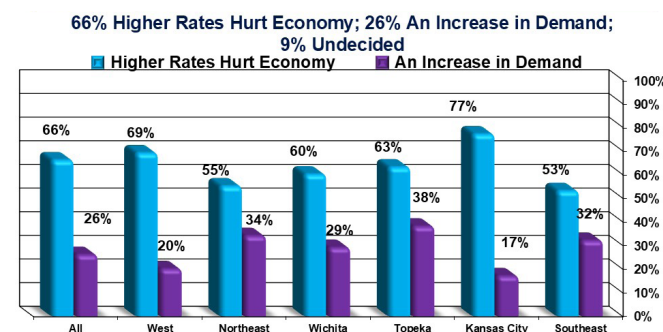
\* Both a federal and state issue

### What does it mean?

Across Kansas, voters overwhelmingly believe higher electricity rates would hurt the economy—not drive demand. This concern is especially strong in Kansas City, where more than three-quarters say rate increases would be economically harmful. The message is clear: Kansans are wary of policies that raise energy costs and see affordability as essential to economic stability.

Source: U.S. Energy Information Administration

### Electricity Rate Increase?

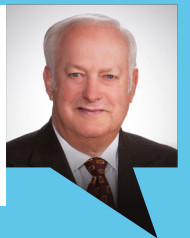


"The Kansas Chamber is at the forefront of advocating for a thriving business environment that benefits every Kansan. With a strong commitment to fostering economic growth, the Chamber tirelessly works to empower businesses to succeed and, in turn, drive prosperity across the state. Their efforts go beyond economic development—they're driven by a deep love for the well-being and future of all Kansans!"

Nick Strecker | INA Alert, Inc.

"Economic competitiveness is essential for Kansas. INTRUST Bank applauds the Kansas Chamber's efforts to educate lawmakers on the far-reaching consequences of their decisions on Kansas businesses and their operations."

Gary Schmitt | INTRUST Bank



## HEALTH CARE\*

### REDUCE EMPLOYER COSTS, PROMOTE PERSONAL RESPONSIBILITY

The Kansas Chamber supports meaningful health care reform aimed at lowering the overall cost of health care so it is more affordable for employers and will:

- ▶ Support policies that eliminate government restrictions on medical professionals' ability to perform duties within the scope of practice of their professional training.
- ▶ Oppose expansion of Medicaid eligibility.
- ▶ Oppose government competition with the private market.
- ▶ Oppose mandated employer-based coverage or payment.
- ▶ Expand tax incentives available for employers and individuals choosing to purchase individual policies or health savings plans.
- ▶ Defend the rights of employers to choose the health insurance plans they offer.
- ▶ Support access to telemedicine and other service options that increase healthcare options and lower costs to Kansans and employers without prohibiting the right of businesses to freely contract for services.
- ▶ Support state-level implementation of policy measures that improve efficiency and effectiveness of health systems, including the continuation of delivering Medicaid services through a managed care model (KanCare).
- ▶ Oppose cost-increasing mandates insurers are required to include in policies so that more affordable plans are available for employers.
- ▶ Support policies that increase personal participation in health care purchasing.

\* Both a federal and state issue



The Kansas Retail Council (KRC) focuses on retail business issues that impact small and large retailers in Kansas. The mission of KRC is to provide knowledge, resources and support to Kansas retailers so they can prosper. Through the Kansas Chamber, the KRC gives Kansas retailers a strong, unified voice on legislative and public policy matters.

## TAX

- ▶ Reimburse retailers a percentage of the cost to comply with collecting and remitting sales and excise taxes to the state.
- ▶ Oppose efforts which seek to impose a tax on sugary beverages.
- ▶ Support lowering of state sales tax.
- ▶ Protect against changes to long-standing valuation methodology which attempts to take income into consideration when valuing property.

## PRODUCTS

- ▶ Oppose bans on plastics, straws, chemicals and other items.
- ▶ Oppose food labeling mandates.
- ▶ Support ability for all stores to sell full strength beer, wine and spirits.

## EMPLOYMENT LAW

- ▶ Protect against repeal of Kansas law which prevents local units of government from imposing harmful mandates not required by state or federal law including:
  - Fair scheduling
  - Minimum wage
  - Paid leave



The Kansas Manufacturing Council (KMC) is the leading advocacy organization for Kansas manufacturers and companies serving manufacturers, representing small and large manufacturers across the state. The mission of KMC is to provide knowledge, resources and support in order to create a stronger and more prosperous manufacturing sector. Through the Kansas Chamber, KMC has a powerful voice for the state's manufacturing community to advocate for a policy agenda that helps manufacturers compete in the global economy and create jobs across Kansas.

## TAX

- ▶ Reduce government spending instead of increasing the cost of doing business through tax increases.
- ▶ Support legislation which grants corporate taxpayers the ability to choose between the current three-factor apportionment formula and a new, single-factor sales-based formula.

- ▶ Avoid picking winners and losers among energy sources and technologies.
- ▶ Support incentives for businesses to voluntarily utilize energy more efficiently versus penalties and/or mandates.

## EDUCATION & WORKFORCE DEVELOPMENT

- ▶ Support policies which promote coordination of resources and alignment of curriculum between K-12 and higher education institutions to ensure the workforce needs of Kansas businesses and career needs of students are being met.
- ▶ Support vigorous and dynamic Kansas-based primary and secondary education standards that focus on college and career readiness and which ensure acquisition, retention and comprehension of an essential base of knowledge at every step of the educational process toward a career suited to each student's interest and ability.
- ▶ Support efforts to offer parents and students a variety of educational choices regardless of their socio-economic status, and support efforts to create innovative school environments designed to maximize the educational experience for all students.
- ▶ Support Work Based Learning opportunities for high school students ages 16 and older through legislation limiting liability to the businesses participating in school sponsored programs.

## REGULATORY AFFAIRS

- ▶ Maintain a set of clear requirements in the regulatory process that instills confidence for businesses that follow the rules when seeking to do business in the state.
- ▶ Prevent imposition of burdensome state and federal regulations on business and industry.

## ENERGY

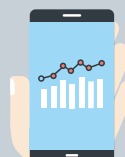
- ▶ Oppose ROFR (Right of First Refusal) laws which eliminate competitive bidding for construction of regional transmission lines.
- ▶ Support limits on increases in transmission delivery charges.
- ▶ Support equitable allocation of transmission and energy costs among regional ratepayers.
- ▶ Support implementation of key recommendations from the legislative study on the competitiveness of Kansas energy rates to improve our state's electricity costs.

## THE NEW KANSAS CHAMBER APP

Stay up to date with the Kansas Legislature through the new Kansas Chamber app. The Chamber app gives you direct access to legislative calendars, journals, district maps and live stream audio from the House and Senate floor – all on your phone. Scan the corresponding QR code to download our app on your iOS or Android device today.



[KansasChamber.org/Legislative-App](https://KansasChamber.org/Legislative-App)



# 2026 KANSAS CHAMBER BOARD OF DIRECTORS

## EXECUTIVE COMMITTEE MEMBERS

**Ivan Crossland**  
Crossland Construction

**Justin Hill**  
Lawrence Paper Company

**Korb Maxwell**  
Polsinelli

**Dean Newton**  
Delta Dental

**Doug Gaumer**  
First Federal Bank of Kansas City

**Coleen Jennison**  
Kansas Chamber

**Sunee Mickle**  
Blue Cross & Blue Shield of Kansas

**Sam Sackett**  
Boeing

**Chuck Grier**  
UCI

**Paula Landoll-Smith**  
Landoll

**Mike Morgan**  
Koch Industries, Inc.

**HJ Swender**  
American Warrior, Inc.

**John Guyot**  
Security Benefit

**Karma Mason**  
iSi Environmental

**Dave Murfin**  
Murfin Drilling Company

**Steve Webb**  
Forvis Mazars

## DIRECTORS

**Rachel Aja**  
Cox

**Mark Eaton**  
Envision, Inc.

**Beau Jackson**  
Husch Blackwell

**Darin Miller**  
AT&T

**Brad Schlozman**  
Hinkle Law

**Nick Strecker**  
INA Alert, Inc.

**James Brungardt**  
Sunflower Electric Power Corp.

**Mike Estes**  
BTI

**Heather Jantz**  
MJE, LLC

**Juan Morales Robledo**  
Goodyear Tire

**Gary Schmitt**  
INTRUST Bank

**Daniel Trope**  
Garmin International

**Andy Buessing**  
Hutton

**John Estus**  
Amazon

**Patrick Leopold**  
Hill's Pet Nutrition

**Tyler Nordquist**  
Kiewit

**Doug Scott**  
Textron Aviation

**Patrick Vogelsberg**  
Kansas Gas Service

**Nico Ciccone**  
NextEra Energy Resources

**Patrick Fucik**  
T-Mobile

**Laura Lutz**  
Eergy

**Patrick O'Farrell**  
Lockton Affinity, LLC

**Trent Sebits**  
Pickrell Drilling Co.

**Jared Ward**  
HF Sinclair

**Ron Coker**  
Burns & McDonnell

**Patrick Gideon**  
Silver Lake Bank

**Shirley Martin-Smith**  
Adecco

**Jack Paradise**  
Jayhawk Plastics, Inc.

**Josh Shorter**  
KMC/Integrated Components, Inc.

**Staci Williams**  
KRC/Petland Retail Stores

**Matt Cortez**  
Tessere

**Meeghan Hansen**  
BG Products

**Tracy Metzger**  
Lowen Corporation

**Steve Peterson**  
Busey Bank

**Ward Slocum**  
Black Hills Energy

**Patrick Woods**  
ITC Great Plains



534 S Kansas Ave, Ste 1400 • Topeka, KS 66603

(785) 357-6321 • [president@kansaschamber.org](mailto:president@kansaschamber.org)

[kansaschamber.org](https://www.kansaschamber.org)

## AFFILIATE ORGANIZATIONS

American Free Enterprise Chamber of Commerce

Kansas Chamber Political Action Committee

Kansas Chamber Education Foundation

Kansas Manufacturing Council

Kansas Retail Council

Leadership Kansas

State Affiliate of Ntnl. Assoc. of Manufacturers (NAM)

State Affiliate of National Retail Federation (NRF)